

**INSTRUCTIONS TO DUPLICATE
THE TRANSMITTER CODES**

N.B.: Duplication is possible only if an already encoded transmitter is available

Jubi-Small•433

2 CHANNELS



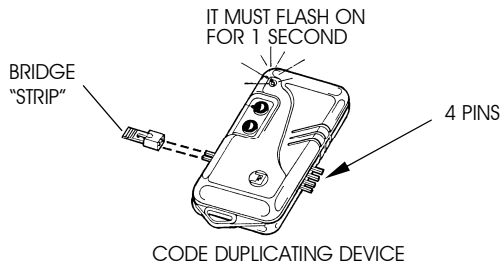
Jubi•433

4 CHANNELS



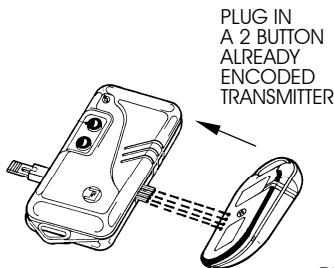
A) Switching on is by inserting the "STRIP" bridge on to the pins on the left side of the "code duplicator", simultaneously a "led" flashes on for a second.

The "code duplicator" is ready for duplication operations.

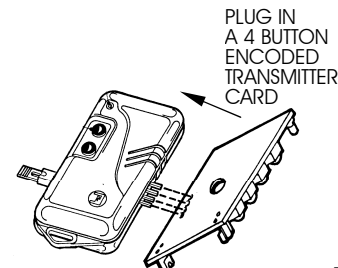


Pic. 1

B) First plug in the previously encoded 2 button transmitter or the 4 button transmitter card to allow the "duplicator" to store the existing code as shown in pic.2.

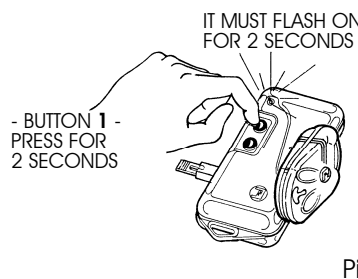


Pic. 2

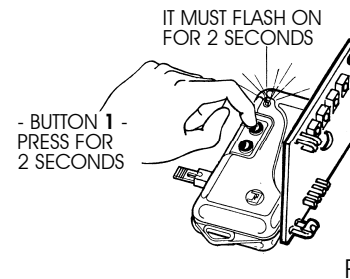


Pic. 2

C) Press button 1 of "duplicator" for at least two seconds. The code is so transferred from the existing transmitter to the memory of the "duplicating device". Pic.3
If the operation is successfully achieved, the "led" flashes on for two seconds. In case it does not, remove the transmitter and repeat the operations from point **A**.

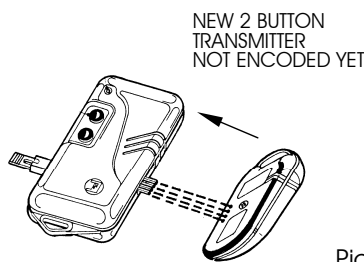


Pic. 3

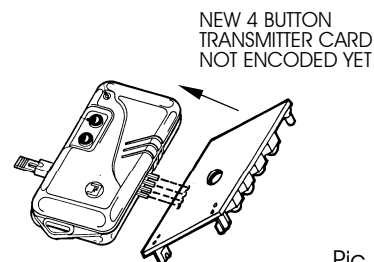


Pic. 3

D) Remove the "existing" 2 button transmitter or the 4 button transmitter card from the pin connector and plug in the new transmitter. Pic.4.

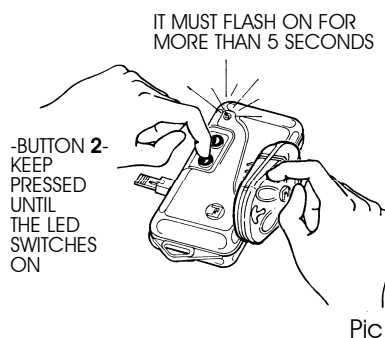


Pic. 4

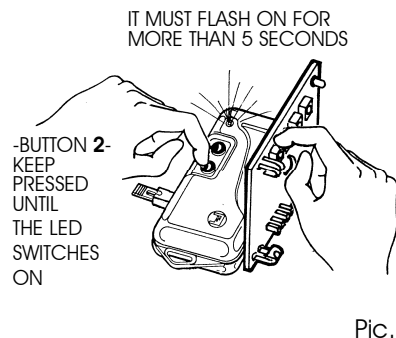


Pic. 4

E) Keep button 2 of the "DUPLICATOR" pressed until the LED switches off. The stored transmitter code is so transferred to the new transmitter. (Pic.5)
- If the operation is successfully achieved, the "led" of "duplicator" flashes on for five seconds (Pic.5).
- Other new transmitters can be given the same code by repeating step **E**.
- New transmitters can be match encoded with different "existing" transmitters by repeating steps **A-B-C-D-E-F** for each different code.

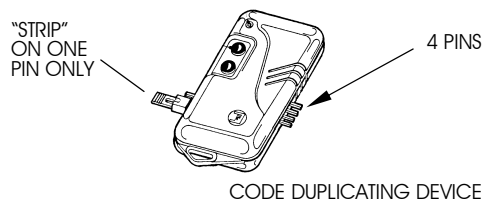


Pic. 5



Pic. 5

F) Once completed all the encoding operations with the required new transmitters, switch off the "encoding device" by removing the "STRIP" bridge and plug it on to one pin only. Pic.6-Equipment on stand-by.
- On removal of the "STRIP" from the two pins, the transmitter code is automatically deleted from the memory of the code "duplicator", which is ready to take a new transmitter to duplicate by following the instructions **A-B-C-D-E-F**.



Pic. 6

CODE DUPLICATOR *Jubi*•433

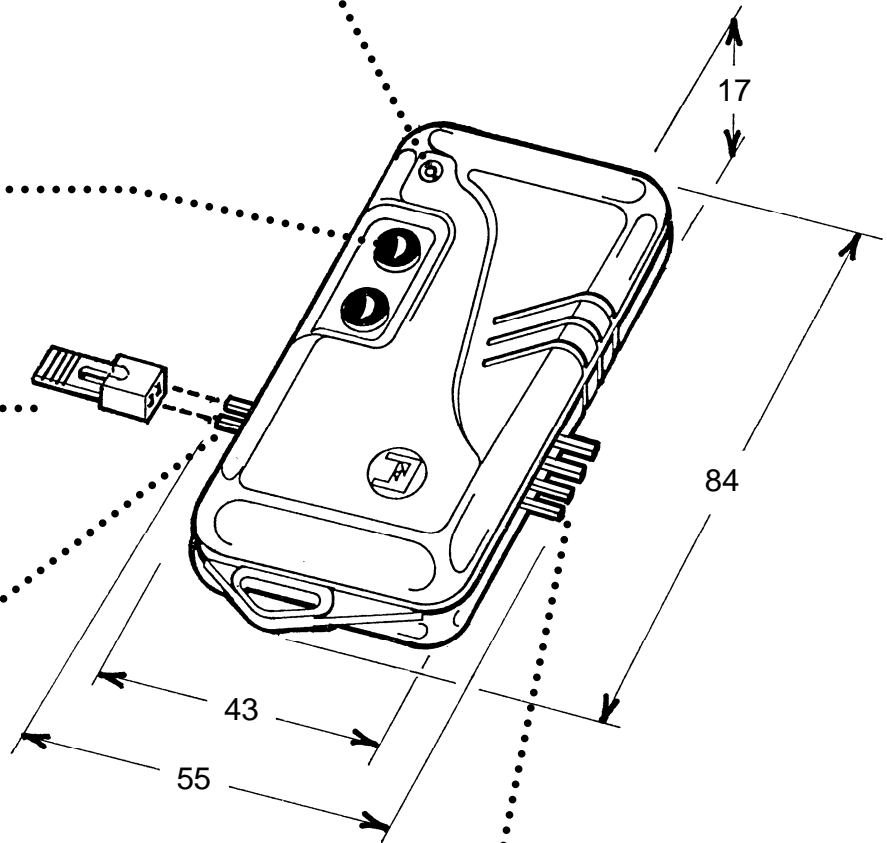
"LED" INDICATION
CORRECT PERFORMANCE

BUTTONS
"NIGHT BLUE"
IN COLOUR

"STRIP"
BRIDGE

SWITCH ON
CONNECTOR

PINS TO
PLUG IN
TRANSMITTERS
JUBI-SMALL 433/2 Tr
JUBI 433/4 Tr



ABS MATERIAL = B70 SINKRAL



FADINI
the gate opener
Made in Italy

Drwg. No. 3086

DEVICE TO "DUPLICATE" TRANSMITTER CODES
series **Jubi-Small**•433/2 Tr and **Jubi**•433/4 Tr



meccanica
FADINI